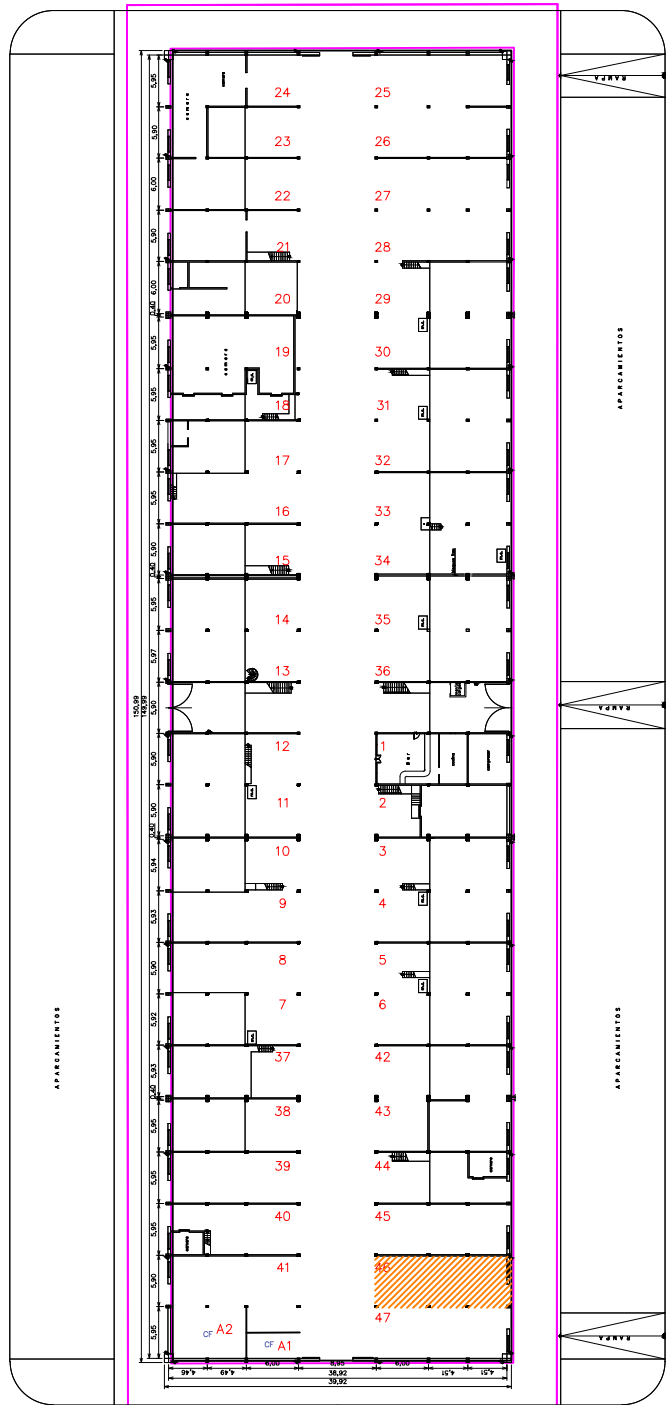
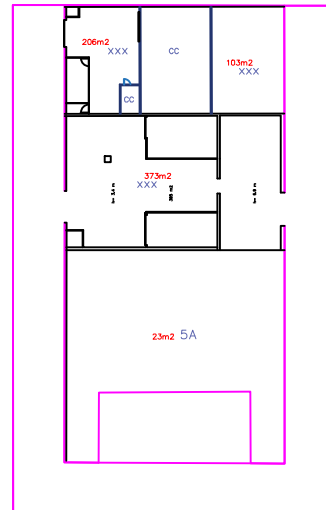
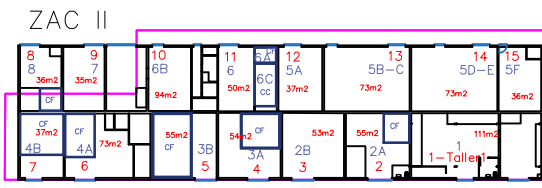
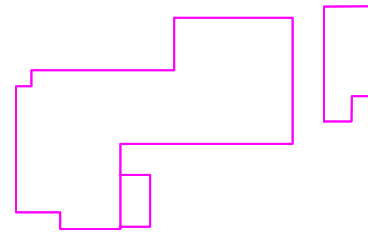


ZAC III: 810 m²
 ZAC II: 934 m²

ZAC I (POLIVALENCIA): 1.332 m² Nave
 834 m² Muelle



LEYENDA



ZAC I (POLIVALENCIA): 1.332 m² Nave
 834 m² Muelle
 ZAC II: 934 m²
 ZAC III: 810 m²